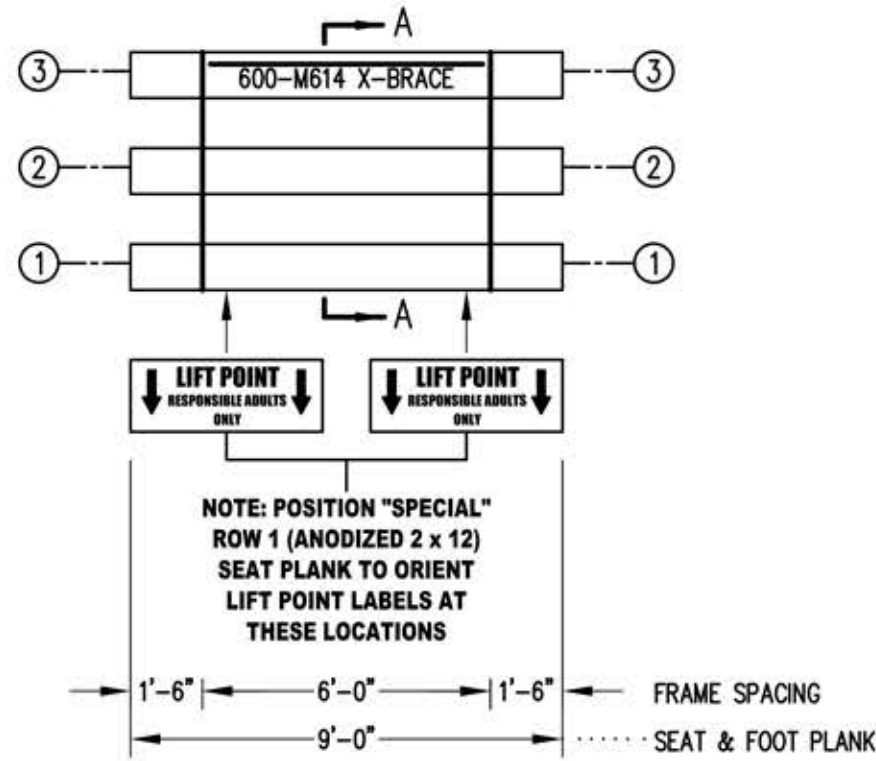
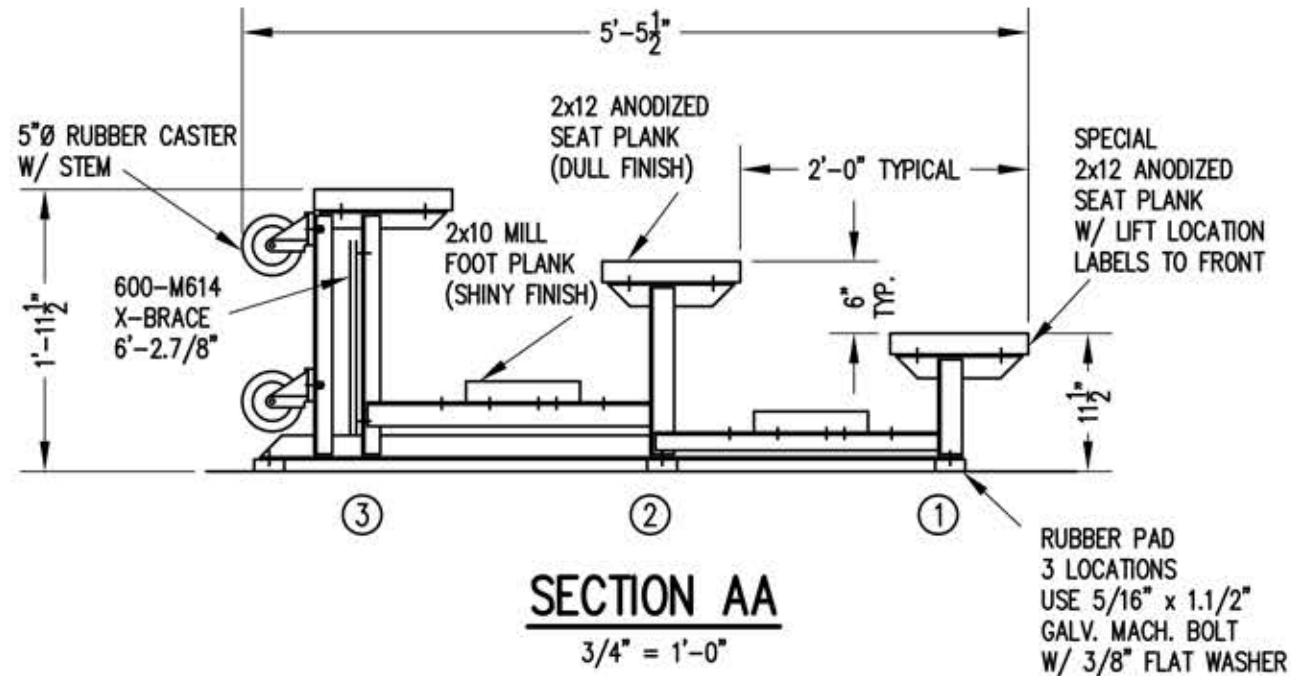


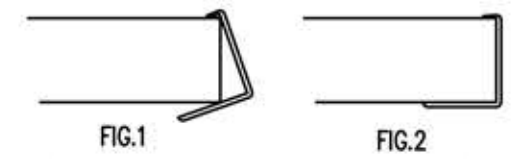
# INSTRUCTION/ASSEMBLY DRAWING



**SEAT & FRAMING PLAN**  
1/4" = 1'-0"  
18 NET SEATS @ 18" PER SEAT



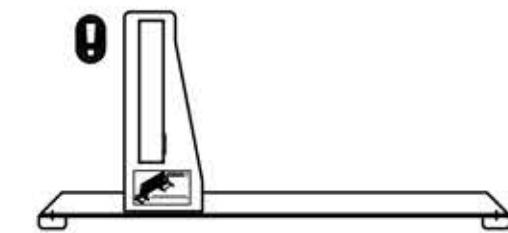
**SECTION AA**  
3/4" = 1'-0"



- 1) LOCATE THE CHANNEL END CAP AS SHOWN IN FIG. 1.
- 2) TAP END CAP INTO PLACE WITH RUBBER Mallet OR SOFT WOOD. FIG.2
- 3) DRILL TWO 5/32" HOLES THROUGH THE BOTTOM FLANGE AND THE BOTTOM OUTSIDE PLANK FLANGES. INSTALL TWO 3/16" DRIVE RIVETS. (2 PER PLANK)

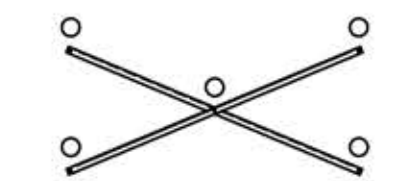
**END CAP DETAIL**

N.T.S.



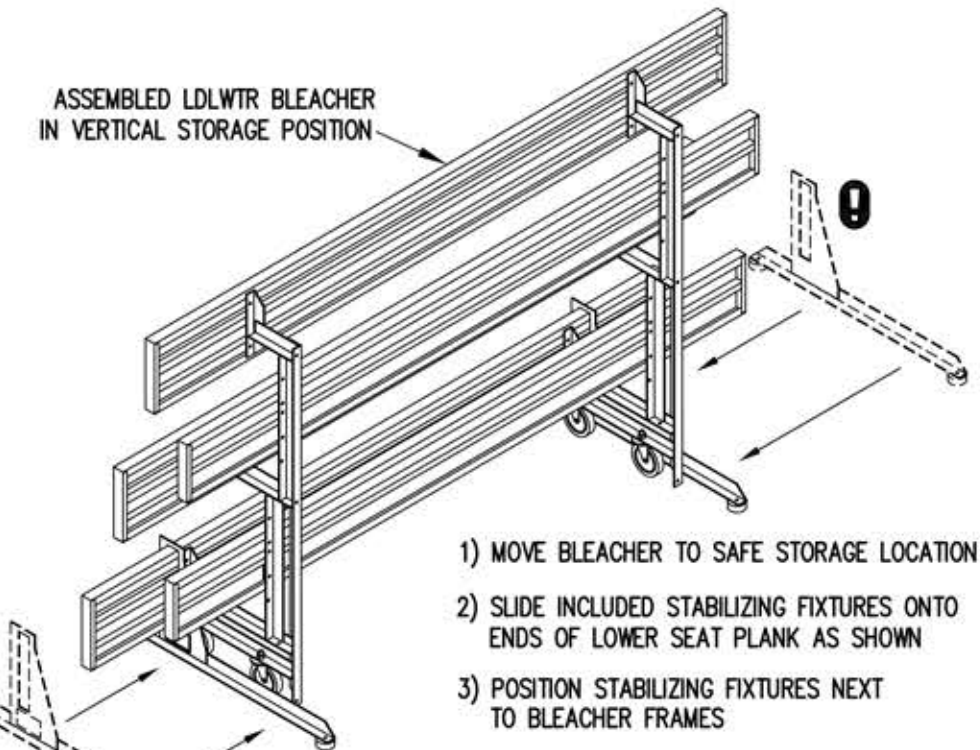
3/4" = 1'-0"

STABILIZING FIXTURE - ONE REQUIRED FOR EACH END OF BLEACHER



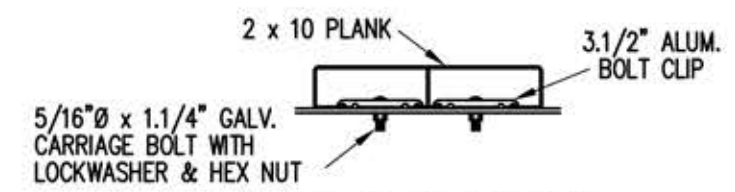
N.T.S.

○ 7/16" X 1" GALV. MACH. BOLT



**VERTICAL STORAGE OF BLEACHER WHEN REQUIRED**

NOTE: OUTDOOR ALUMINUM INC. RECOMMENDS STORING TIP AND ROLL BLEACHERS IN THE "IN USE" POSITION WHEN POSSIBLE - WHERE VERTICAL STORAGE IS REQUIRED, ALL OUTLINED PROCEDURES AND SAFETY WARNINGS, SPECIFICALLY INCLUDING THE MANDATORY USE OF THE STABILIZING FIXTURES OUTLINED ABOVE, MUST BE STRICTLY FOLLOWED.



**BOLT CLIP DETAIL**

1.1/2" = 1'-0"



SIGHTLINES  
ATHLETIC FACILITIES  
CRESTWOOD, KY  
800-609-1545