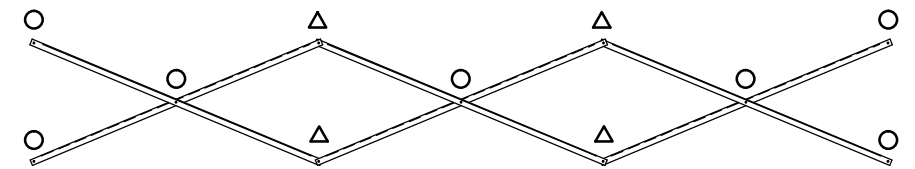


SEATING & FRAMING PLAN

1/4" = 1'-0"
42 NET SEATS @ 18" PER SEAT

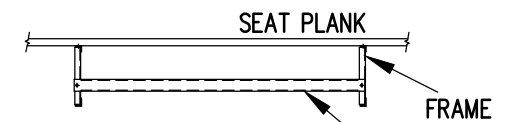
- DENOTES AXLE SLEEVE LOCATIONS
- ▷ DENOTES TONGUE GUIDE LOCATIONS



X-BRACE DETAIL

N.T.S.

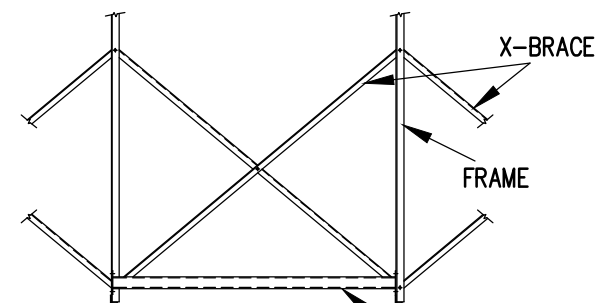
- 7/16" X 1" GALV. MACH. BOLT
- △ 7/16" X 1.1/2" GALV. MACH. BOLT



VIEW CC

N.T.S.

700-MC99 - ATTACH WITH (2) 7/16" x 1" GALV. MACH. BOLT.

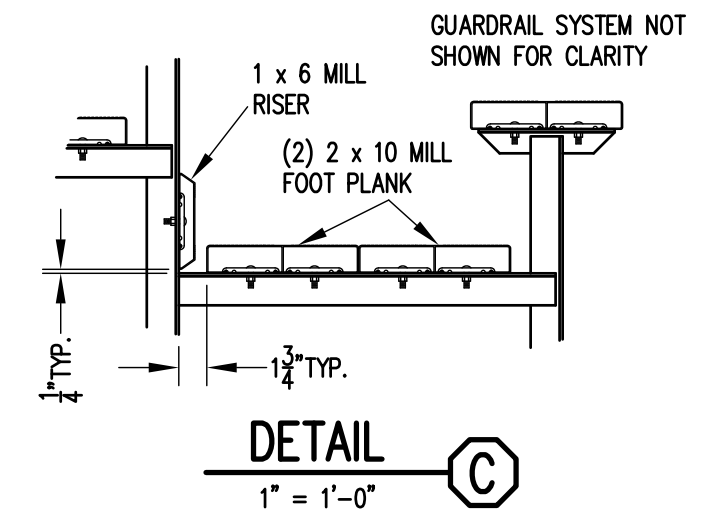
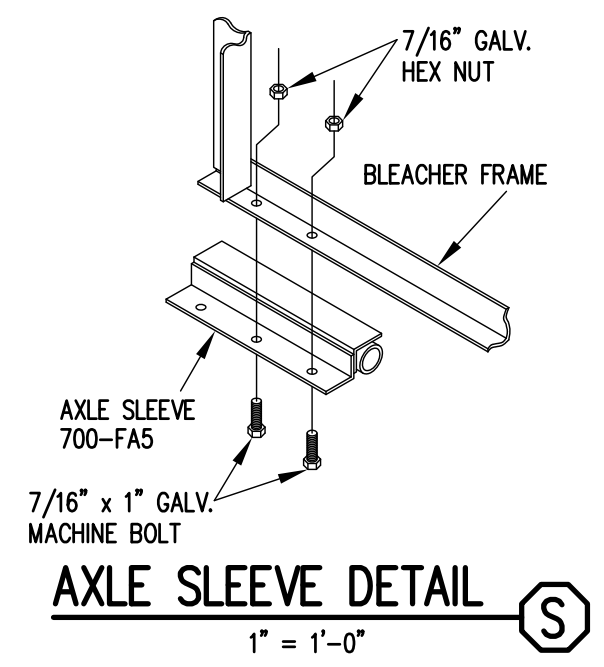
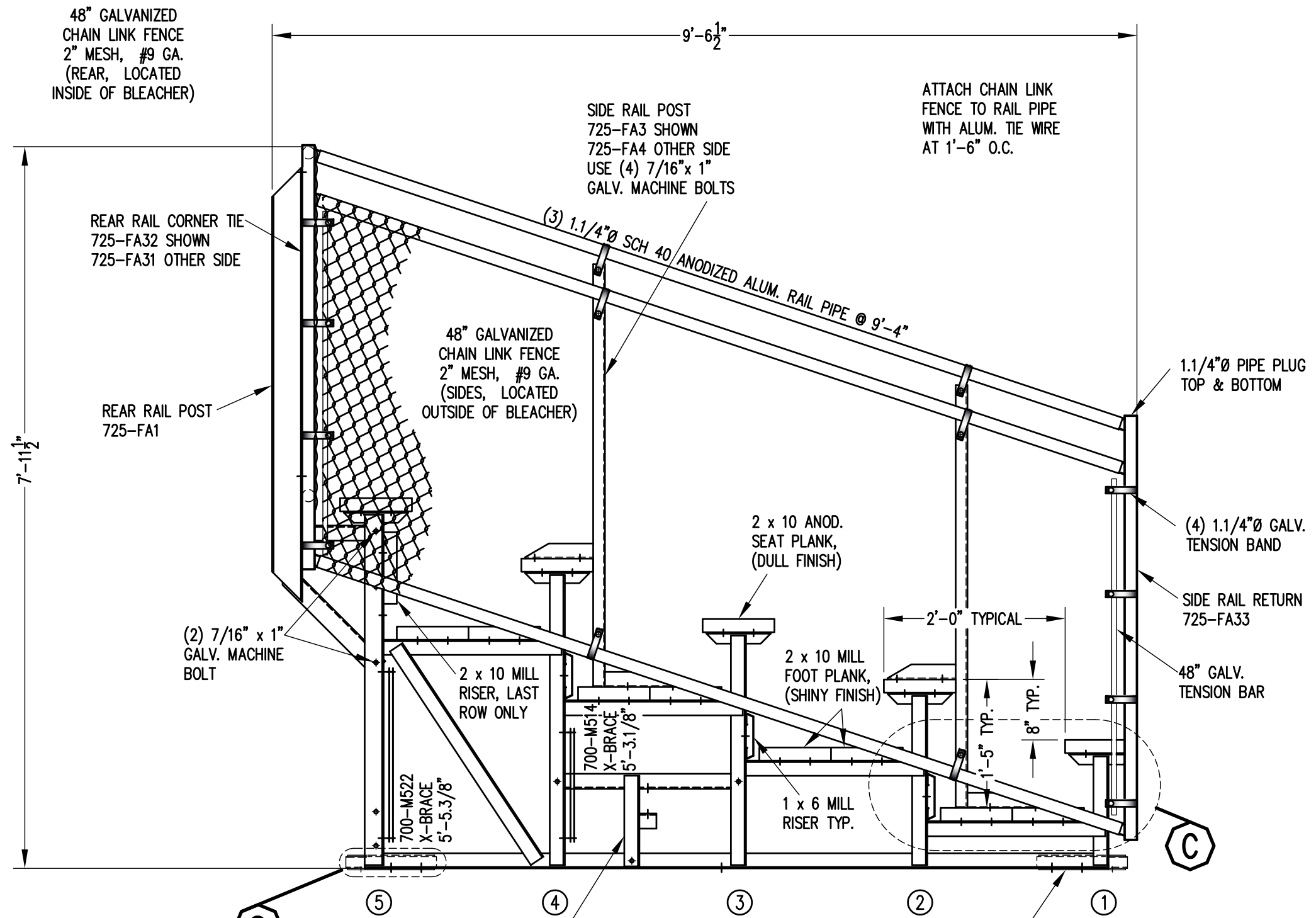


VIEW DD

N.T.S.

700-FA3 - ATTACH WITH (4) 7/16" x 1" GALV. MACH. BOLT

		P.O. BOX 118 GENEVA, ALABAMA 36340 334-684-2296	
DATE 11/2/11			
DR'N <i>CDK</i>	CKD		
AP'VD			
TITLE			NO.
TDLW 5-15 SEATING/FRAMING PLAN W/ END AISLE			784-E2064



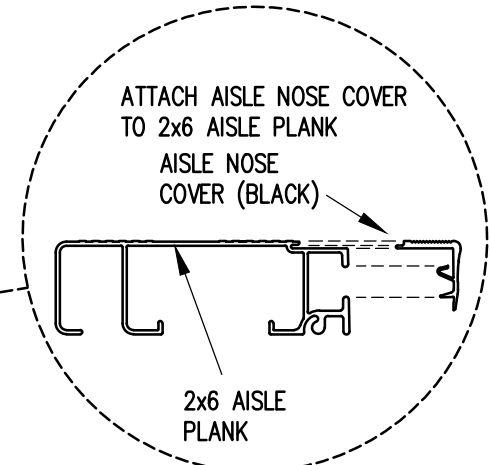
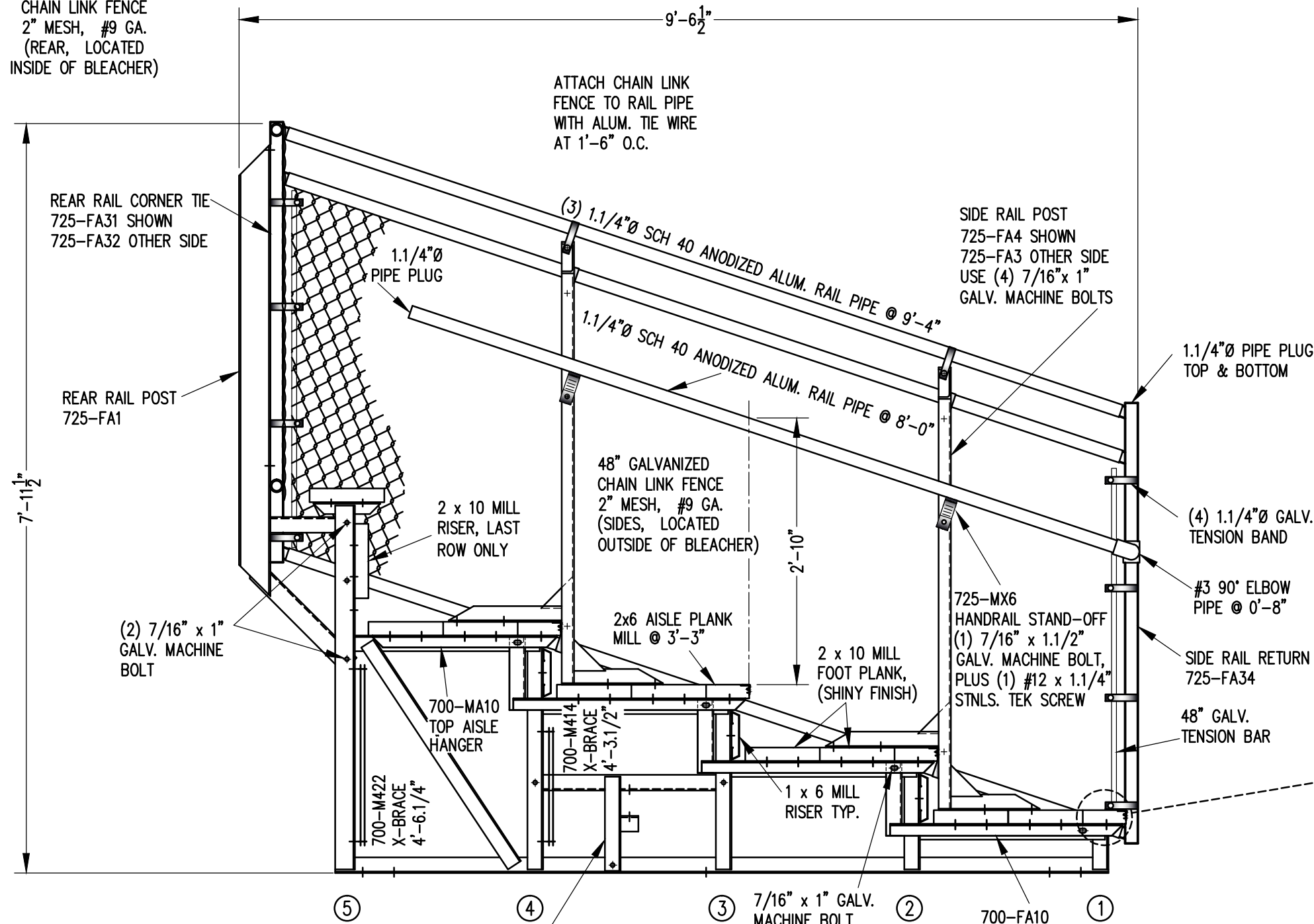
'T' TONGUE GUIDE
700-FA1
ATTACH W/ (3) 7/16" x 1"
GALV. MACHINE BOLTS
SEE FRAMING PLAN FOR
LOCATIONS.

VIEW AA
3/4" = 1'-0"

AXLE SLEEVE
700-FA5
ATTACH W/ (2) 7/16" x 1"
GALV. MACHINE BOLTS
SEE FRAMING PLAN FOR
LOCATIONS.

		P.O. BOX 118 GENEVA, ALABAMA 36340 334-684-2296	
		SCALE AS NOTED	REVISIONS
DATE 11/2/11			
DR'N <i>ADK</i> CKD			
AP'VD			
TITLE		NO.	
TDLW 5 ROW VIEW (15'-0" W/ END AISLE)		784-E2087	

48" GALVANIZED
CHAIN LINK FENCE
2" MESH, #9 GA.
(REAR, LOCATED
INSIDE OF BLEACHER)

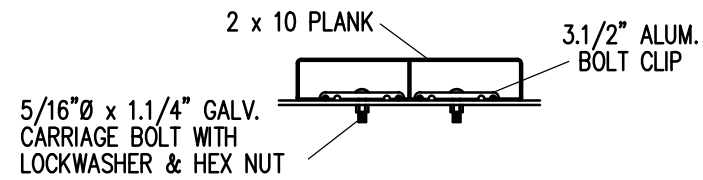


NOTE: ALL AISLE HANGERS - TWO PER LOCATION REQUIRED, TYPICAL

'I' TONGUE GUIDE
700-FA1
ATTACH W/ (3) 7/16" x 1"
GALV. MACHINE BOLTS
SEE FRAMING PLAN FOR
LOCATIONS.

SECTION BB
3/4" = 1'-0"

		P.O. BOX 118 GENEVA, ALABAMA 36340 334-684-2296				
		SCALE	AS NOTED	REVISIONS	BY	DATE
DATE	11/2/11					
DR'N	CDK	CKD				
AP'VD						
TITLE					NO.	
TDLW 5 ROW SECTION (15'-0" W/ END AISLE)					784-E2088	



BOLT CLIP DETAIL

1.1/2" = 1'-0"

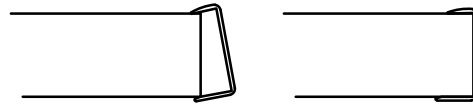


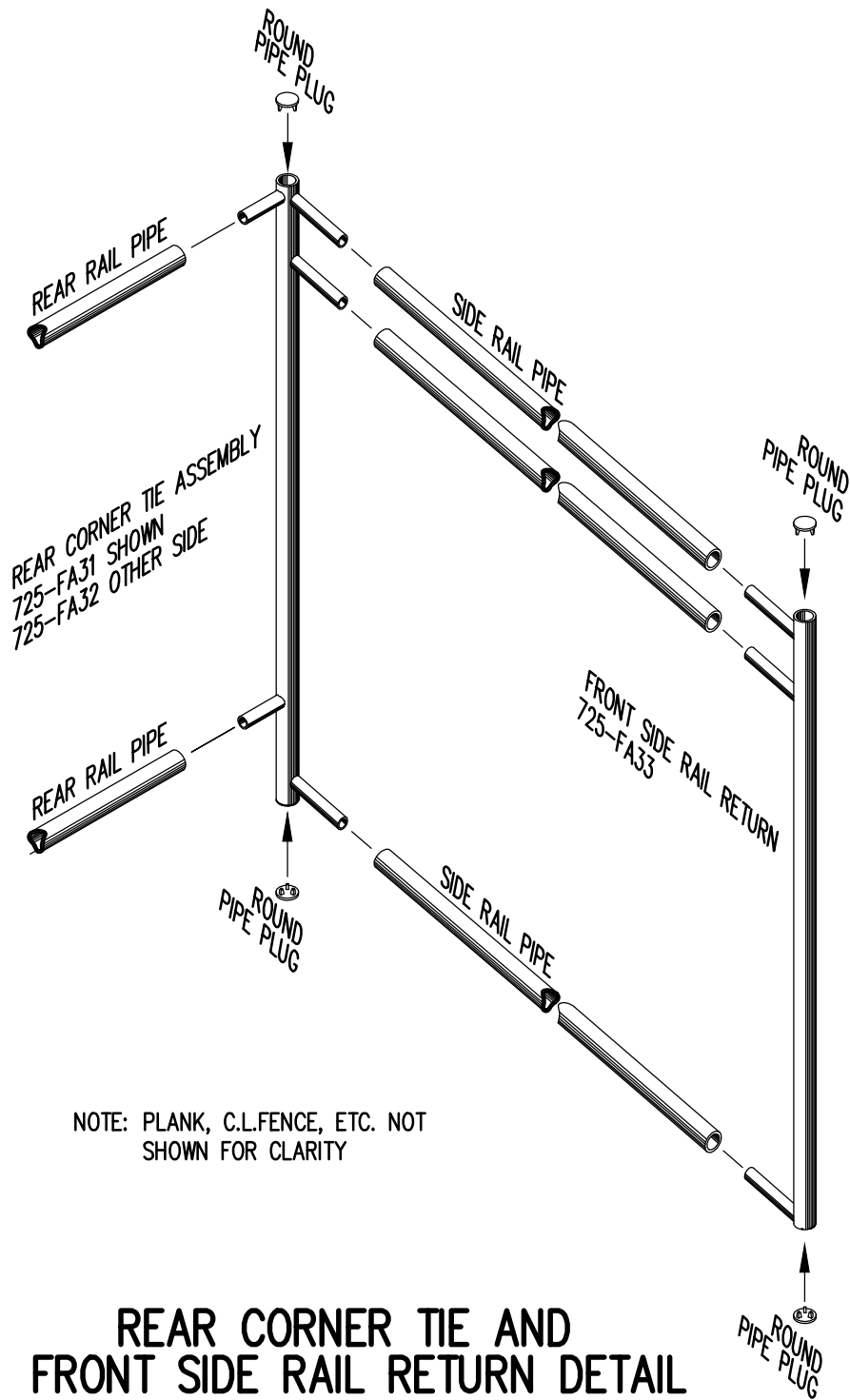
FIG.1

FIG.2

- 1) LOCATE THE CHANNEL END CAP AS SHOWN IN FIG. 1.
- 2) TAP END CAP INTO PLACE WITH RUBBER Mallet OR SOFT WOOD. FIG.2
- 3) DRILL 5/32" HOLES THROUGH THE BOTTOM FLANGE AND THE BOTTOM OUTSIDE PLANK FLANGES OF EACH PLANK. INSTALL 5/32" POP RIVETS.

END CAP DETAIL

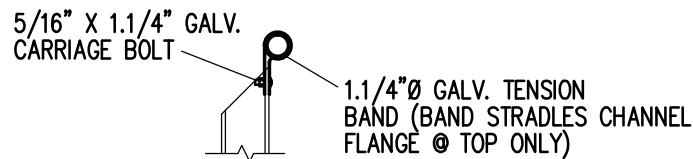
N.T.S.



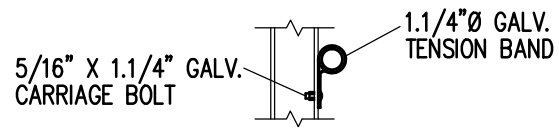
NOTE: PLANK, C.L.FENCE, ETC. NOT SHOWN FOR CLARITY

REAR CORNER TIE AND FRONT SIDE RAIL RETURN DETAIL

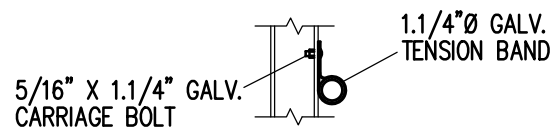
3/4" = 1'-0"



TOP RAIL

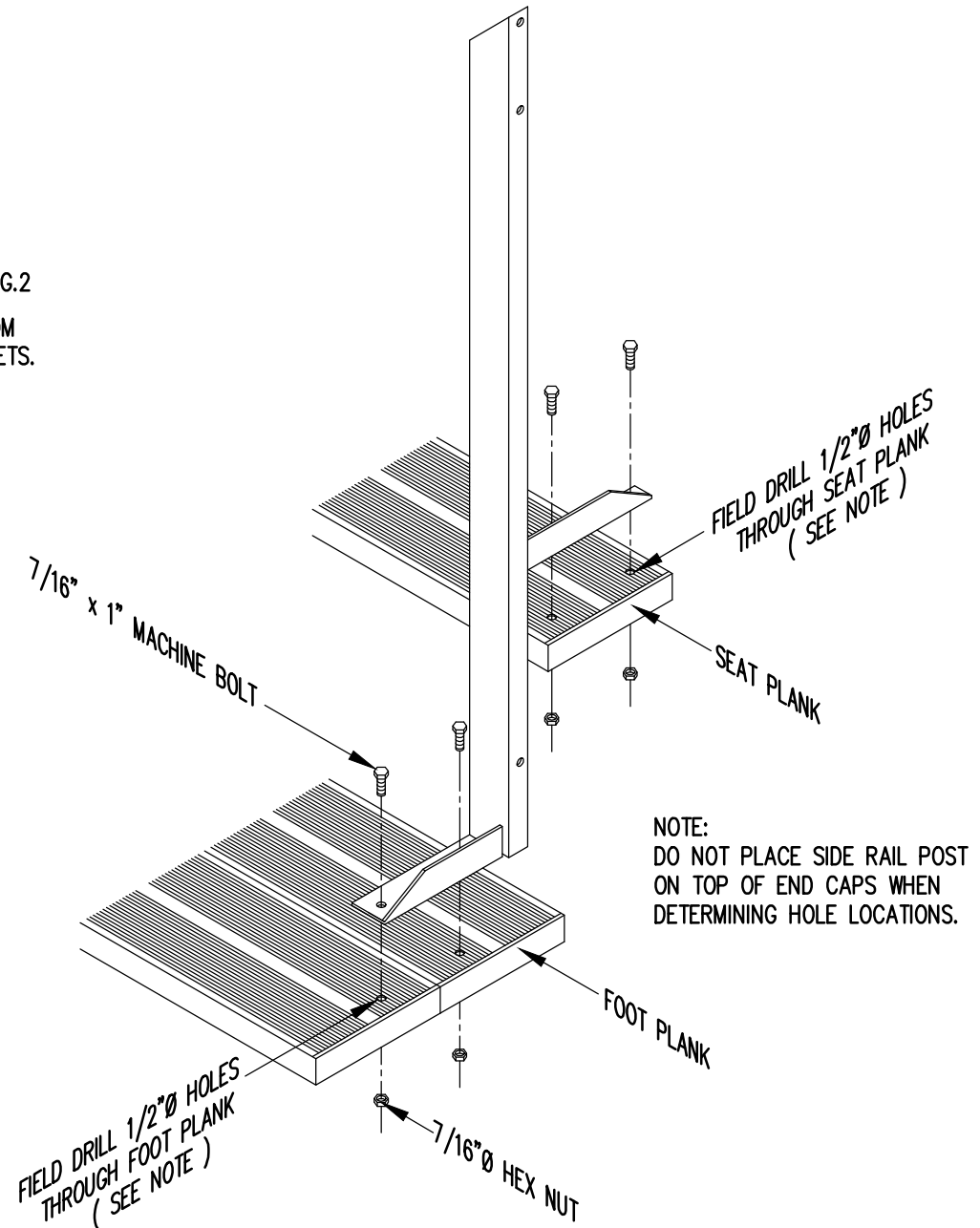


2ND RAIL



BOTTOM RAIL

RAIL PIPE ATTACHMENT

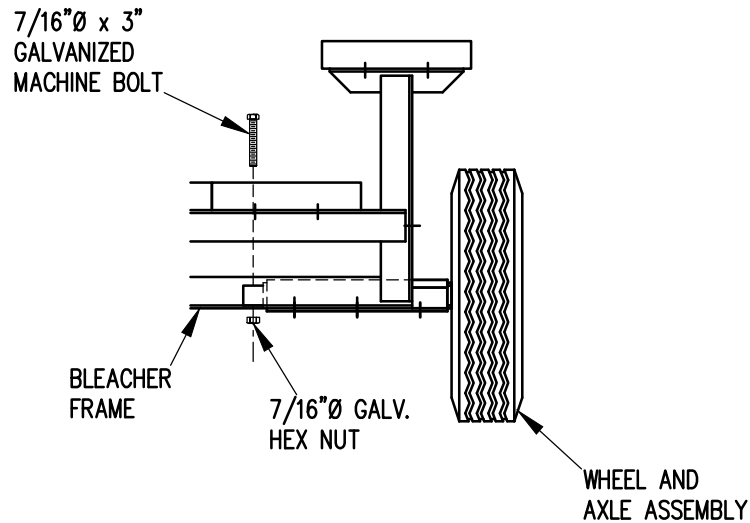
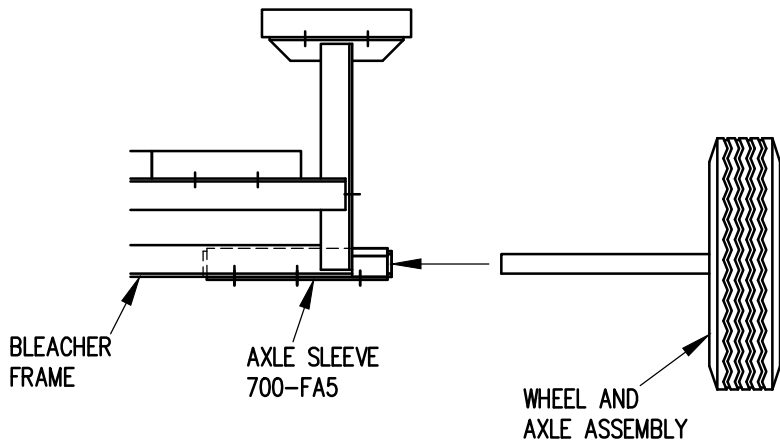


NOTE: DO NOT PLACE SIDE RAIL POST ON TOP OF END CAPS WHEN DETERMINING HOLE LOCATIONS.

TYP. SIDE RAIL POST ATTACHMENT

1" = 1'-0"

		P.O. BOX 118 GENEVA, ALABAMA 36340 334-684-2296				
		SCALE	AS NOTED	REVISIONS	BY	DATE
DATE	11/2/11					
DR'N	CDK	CKD				
AP'VD						
TITLE						NO.
TYPICAL DETAILS						784-E1990

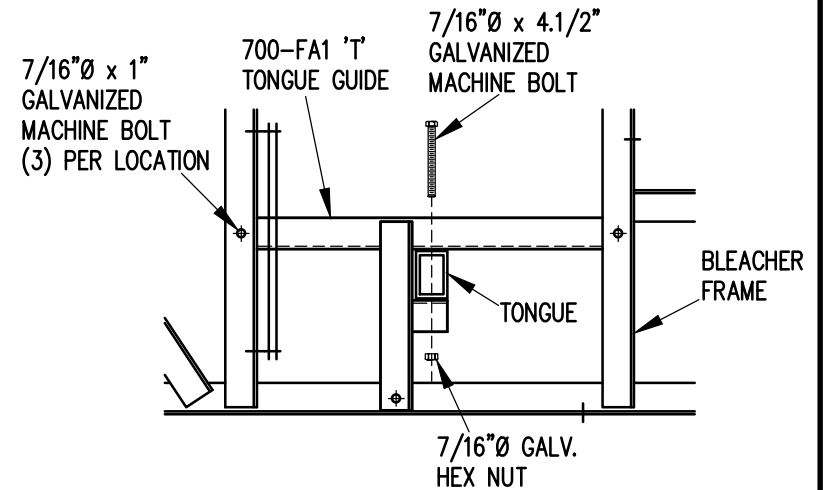


1. ELEVATE BLEACHER TO RECEIVE WHEEL UNITS.
2. INSERT WHEEL AND AXLE ASSEMBLY INTO AXLE SLEEVE AS SHOWN.
3. INSERT 7/16" X 3" GALVANIZED MACHINE BOLT THROUGH AXLE TO SECURE IN AXLE SLEEVE.

WHEEL AND AXLE ATTACHMENT

1" = 1'-0"

NOTE: SEE FRAMING PLAN FOR LOCATION OF AXLE SLEEVES AND TONGUE GUIDES.



1. INSERT TONGUE THROUGH TONGUE GUIDES.
2. ATTACH TONGUE TO TONGUE BRACKETS WITH 7/16" X 4.1/2" GALVANIZED MACHINE BOLTS AS SHOWN.
3. TIGHTEN SECURELY.

TONGUE ATTACHMENT

1" = 1'-0"

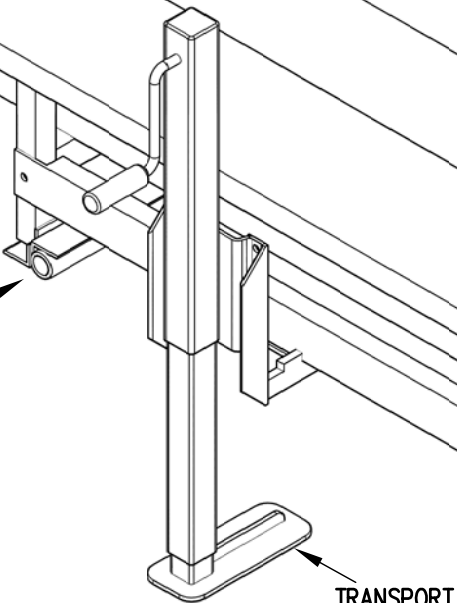
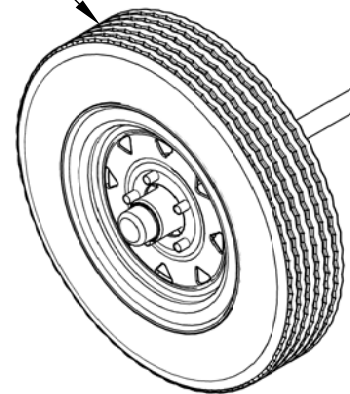


Outdoor
Aluminum

P.O. BOX 118
GENEVA, ALABAMA 36340
334-684-2296

SCALE	1"=1'-0"	REVISIONS	BY	DATE
DATE	11/2/11			
DR'N	ADK	CKD		
AP'VD				
TITLE	1-5 AND 6-10 ROW TRANSPORT COMPONENTS ATTACHMENT DETAILS			NO. 784-E1991

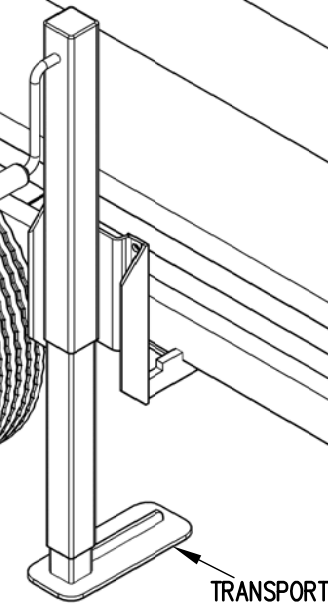
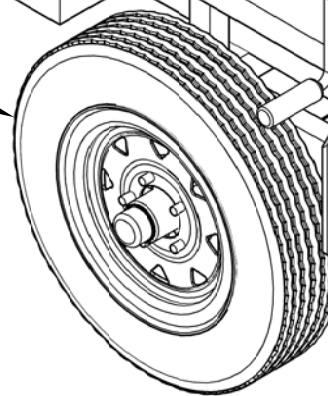
WHEEL AND AXLE ASSEMBLY



TRANSPORT JACK

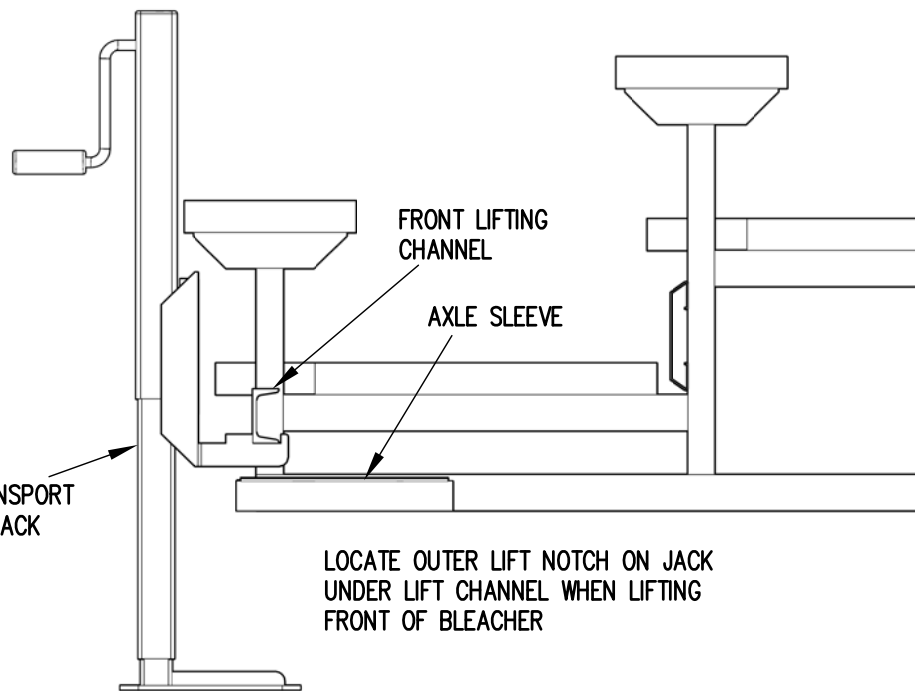
FRONT LIFTING CHANNEL

WHEEL AND AXLE ASSEMBLY



TRANSPORT JACK

FRONT LIFTING CHANNEL

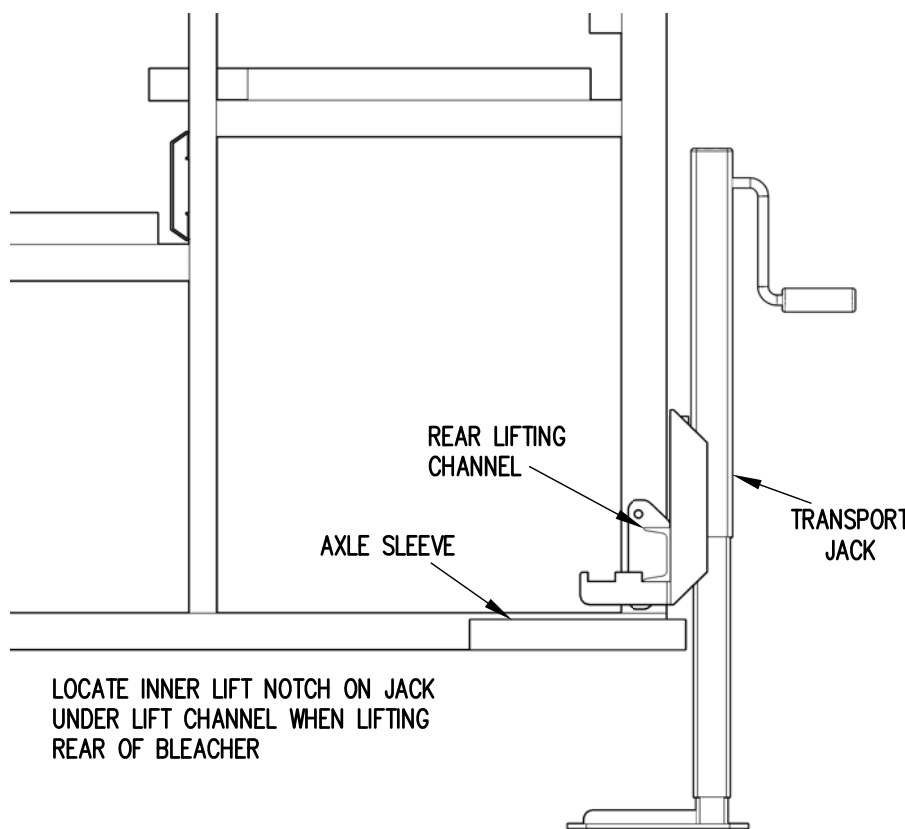


FRONT LIFTING CHANNEL

AXLE SLEEVE

TRANSPORT JACK

LOCATE OUTER LIFT NOTCH ON JACK UNDER LIFT CHANNEL WHEN LIFTING FRONT OF BLEACHER

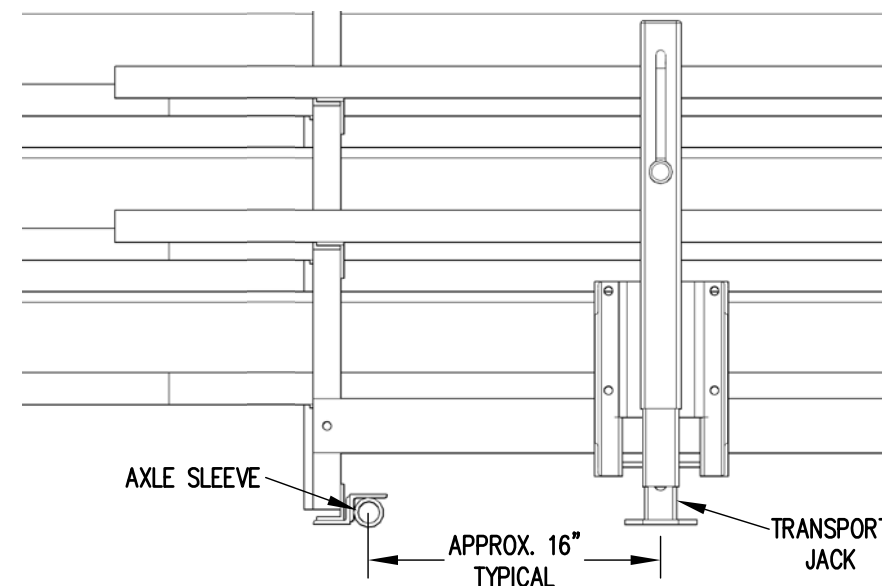


REAR LIFTING CHANNEL

AXLE SLEEVE

TRANSPORT JACK

LOCATE INNER LIFT NOTCH ON JACK UNDER LIFT CHANNEL WHEN LIFTING REAR OF BLEACHER



AXLE SLEEVE

APPROX. 16" TYPICAL

TRANSPORT JACK



Outdoor Aluminum

P.O. BOX 118
GENEVA, ALABAMA 36340
334-684-2296

SCALE	N.T.S.	REVISIONS	BY	DATE
DATE	10/16/14			
DR'N	ADK	CKD		
AP'VD	ADK			
TITLE	1-5 AND 6-10 ROW TRANSPORT JACK PLACEMENT			NO. 784-E1992